



1st Edition, March 05, 2011 | osu.ppy.sh

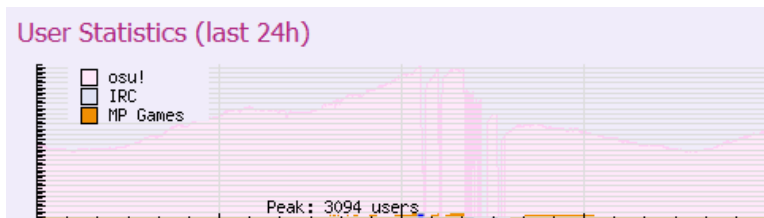
Hello, fellow osu! fans! We would like to welcome you to the first edition of The osu! Monthly! We are a team of enthusiastic osu! members aiming at publishing a newsletter each month that covers the previous month's news and activity.

We are open to any suggestions as to what you would like to see on the newsletter, as this newsletter is made by the community, for the community, and we want your input. If you would like to contribute anything towards the newsletter, have any great ideas to offer, or wish to join the team, don't hesitate to contact us at osumonthly@gmail.com. The more support we have from the community, the better this gets!

Bancho Hits Record of 3,000 Users Online

On January 22, 2011, Bancho -- osu!'s game server -- broke 3,000 simultaneous online users, resulting in a server crash shortly afterwards due to the massive influx of users.

Before the peak, the server had 1,000 to 2,500 users on average. After reaching its peak, it had to undergo several changes to sustain the 3,000 plus users that



had become standard. With the peak now hitting 3,200 users per day, and on rare occasions 3,600 users, the community has grown into something incredible. While no current explanation can be given as to why Bancho experienced such a large spike in the amount of users, it can be assumed that through the help of the community osu!'s name has gotten stronger and to that, we applaud you. So keep spreading the word and let osu! become even more well-known than before!

BAT/MAT Promotions

There have recently been some new additions to the [Beatmap Approval Team](#) and the [Mapping Assistance Team](#), otherwise known as the BAT and MAT respectively. These people are not only well known and respected in the osu! community, but have shown their hard work and dedication to it as well. Everyone on the newsletter team congratulates the following people for their promotions to one of the most prestigious positions in the osu! community.

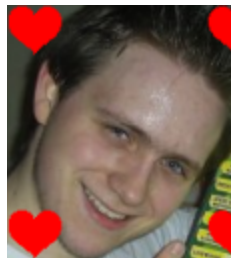
[Derekku](#) has taken on a new role of Community Manager. The Community Manager will have tasks including managing the BAT/GMT and handling news posts/announcements.

MAT



[arien666](#)

[Colin Hou](#)



[Jarby](#)



[jericho2442](#)



[Rukarioman](#)

BAT



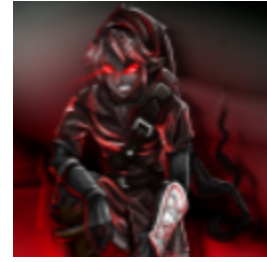
[blissfulyoshi](#)



[Card N'FoRcE](#)



[Doomsday](#)



[James2250](#)

We would like to congratulate the above people, and look forward to what they can bring to osu! in the future.

Also, a new group called the [osu! alumni](#) was also recently formed, containing members that have put a large amount of time and effort into improving osu! Although they have since moved on, this title commemorates their contribution to the community.

Fanart Gallery

After months of seeing the same message “the fanart gallery will be back soon”, progress was made on February 21 after peppy decided to bring the gallery back from the grave. The gallery was made in order for users to easily browse through all the pictures of pippi, osu!’s mascot. These pictures were commonly found in the [osu! fanart thread](#). Since its revival, the gallery has gained some new improvements. This includes new art from the fanart thread as well as the fanart gallery being sorted by creator. If you are curious and want to check the new and improved gallery just click [here](#) and browse to your heart’s content.

Interviews

Since this is the first edition of the newsletter and we want this to be more user guided, we want you to do something for us! We will be interviewing peppy -- the creator of osu! -- for the next newsletter, and are open to your suggestions for what to ask him. Simply send us an email at osumonthly@gmail.com (multiple questions are allowed).

Due to space constraints, our interviews will be limited to a certain amount of questions, so make sure you keep the following in mind when submitting your suggestions to ensure they have a chance at being chosen:

- Put your osu! name, we will ignore the ones without it. We do this just in case of clarification problems.
- Think of interesting questions! Don’t ask “How are you?” Ask something more

interesting like “Has osu! changed you in a positive or negative way?”

- Limit yourself to five questions per month. We don't want to get swamped!
- Finally, have fun!

The Future

The entire newsletter team hopes that you have enjoyed what we have written. If this month's edition seems short, it's because we want to use this issue as an introduction for what is to come. Over the next couple months expect this newsletter to expand into something greater, in fact, here is a list of some of the things we have planned for this newsletter:

- Interviews with some amazing osu! members
- In depth articles about osu!
- Trivia
- Guest writers
- And so much more

So stay tuned for the next edition of The osu! Monthly and if you have anything you want to comment on please contact osumonthly@gmail.com or leave a comment in the [announcement thread!](#)

The osu! Monthly staff is comprised of 9 dedicated people

[jjrocks](#): Leader

[dkun](#): Editor

[Tatsuo](#): Editor and reviser

[Lilac](#): Editor

[Shellghost](#): Editor and reviser

[Danzai](#): Editor and reviser

[GracieLub](#): Meeting minutes and editor

[Yunacat](#): Logo

[Corin](#): Original leader (resigned)